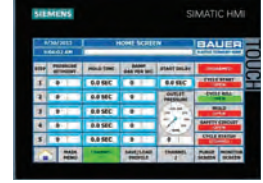


CLASSIC SERIES C23.1

CNG System For Medium To Large Fleets



FEATURES



COMPRESSOR

Featuring BAUER's proven C23.1 four-stage, air-cooled compressor at the heart of the system.

- › Ideal for sites with low inlet pressure
- › Designed continuous duty application
- › Extremely durable workhorse

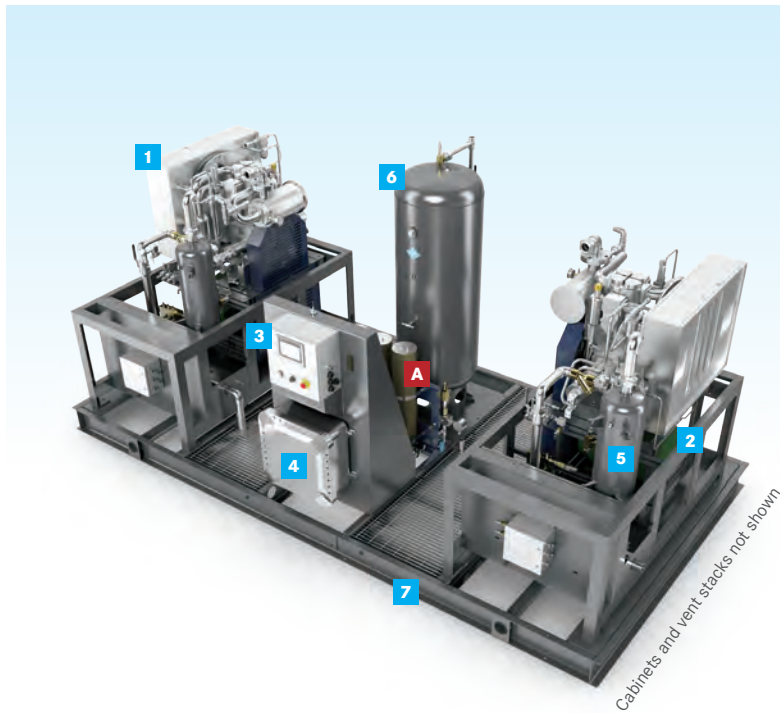
COST OF OWNERSHIP

Designed for long periods between maintenance intervals and very low cost of ownership. 8000 hrs between ring changes. 30,000 hrs before major overhaul. Lifetime BAUER support.

CONTROL SYSTEM

State-of-the-art control system and intuitive machine interface makes operating the unit simple.

- › Excellent diagnostics
- › Remote interface via smartphone option
- › Online manual and operating / maintenance instructions standard



- 1** BAUER C23.1 COMPRESSOR (x2)
- 2** HIGH EFFICIENCY TEFC MOTOR (x2)
- 3** NEMA 4 PLC CONTROL PANEL WITH TOUCH SCREEN OPERATOR INTERFACE AND EMERGENCY STOP BUTTON
- 4** NEMA 7 STARTER PANEL
- 5** INLET BUFFER TANK (x2)
- 6** VAPOR RECOVERY TANK
- 7** COMMON SKID
- 8** ENCLOSURE DESIGNED FOR DURABILITY AND ATTRACTIVE APPEARANCE
- A** HIGH PRESSURE DRYER

■ STANDARD ■ OPTIONAL

TECHNICAL DATA

Model	Inlet Pressure				Final Pressure		Capacity						Number of Stages	Motor	
	PSIG		BAR		PSIG	BAR	CFM*	M ³ /H*	DGE/H	DLE/H	GGE/H	GLE/H		hp*	kW*
	min	max	min	max	max	max									
C23.1 Simplex	1	5	0.07	.34	5000	345	50	85	21	79	25	95	4	40	30
C23.1 Duplex	1	5	0.07	.34	5000	345	100	170	42	158	50	190	4	40 (x2)	30 (x2)

Note: All capacities are referenced to maximum inlet pressure. Capacity is reduced if inlet pressure is less than maximum. *Double for Duplex. Performance tolerance +/- 5%.

BENEFITS

- › **Powerful, totally integrated system** in a compact footprint with available on-board storage — easy and economical to install.
- › **BAUER'S legendary performance, quality, and reliability guaranteed** — backed by the best warranty in the industry.
- › **Standard, pre-engineered system with customizable options.**
- › **Great value with time proven performance** available in Simplex and Duplex execution
- › **Easy to maintain with low cost of ownership** makes the unit very economical to operate.

SYSTEM FOOTPRINT

SIMPLEX:

DIMENSIONS L X W X H inches (mm)

- › 107" x 92" x 80" (2718mm x 2337 x 2033mm)

WEIGHT pounds (kg)

- › 4500 lb (2041 kg)

DUPLEX:

DIMENSIONS L X W X H inches (mm)

- › 180" x 92" x 80" (4572mm x 2337 x 2033mm)

WEIGHT pounds (kg)

- › 10,000 lb (4536 kg) depending upon model and options

*Dimensions exclude vent stack **Dimensions and weight approximate

Designed in compliance with NFPA 52 and NFPA 70 for Class 1, Division 2, Group D.



› **CLASSIC SERIES:**
SIMPLEX



› **CLASSIC SERIES:**
DUPLEX

OPTIONAL FEATURES

- › High Pressure Drying
- › Cell Phone Modem with Remote Notification (Simple SCADA)
- › Remote Control with the **BAUER Remote HMI™**
- › Compressor Crankcase Heaters
- › Audible Alarm

CUSTOMER SUPPORT



GLOBAL SUPPORT



SINGLE SOURCE RESPONSIBILITY



LOW COST OF OWNERSHIP

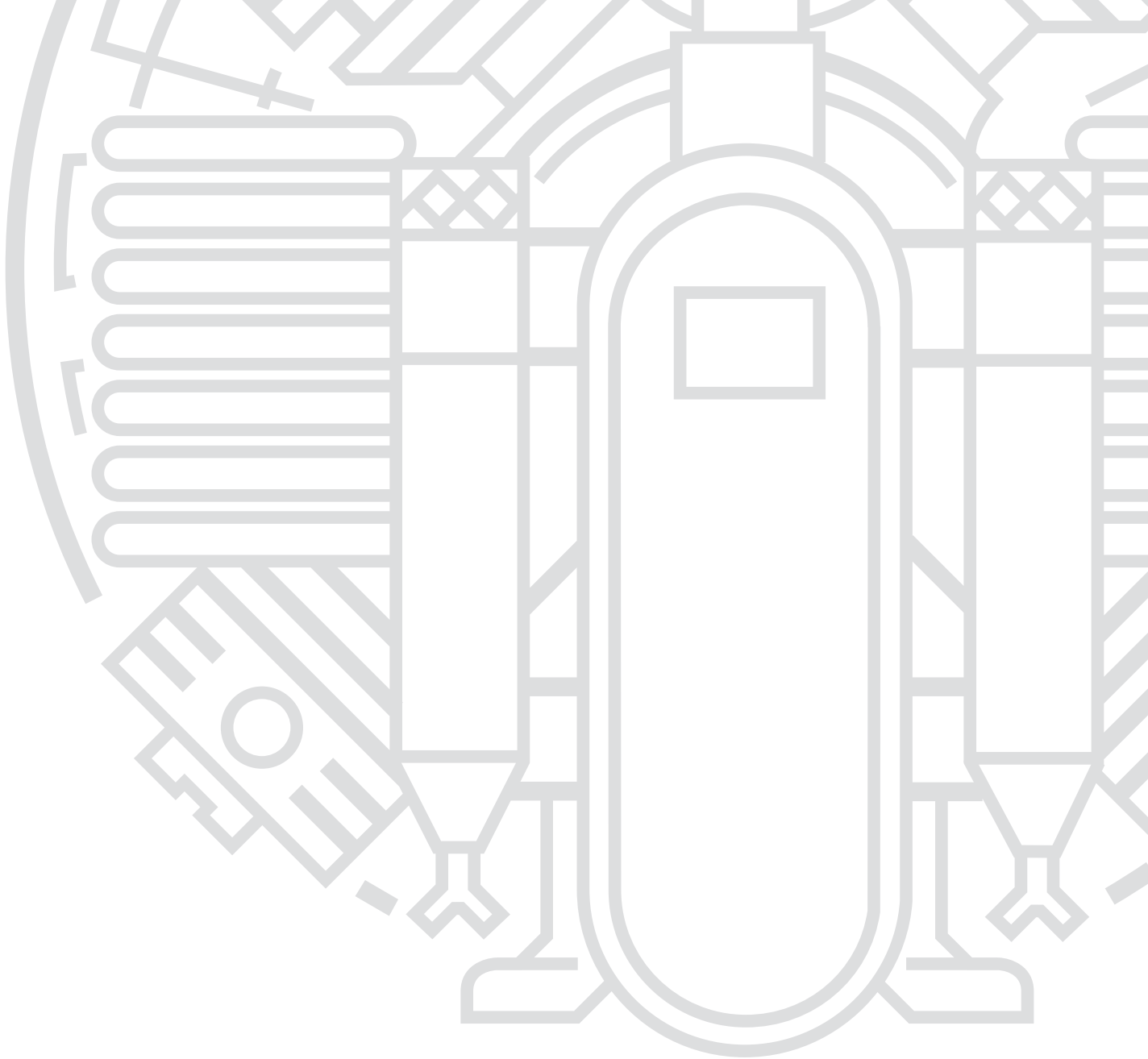


LIFECYCLE PERFORMANCE

FOR MORE INFORMATION PLEASE VISIT:

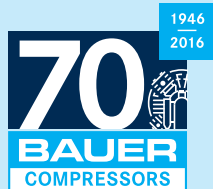
www.BauerCustomerSupport.com





**WATCH OUR NEW
CNG VIDEOS AT:
www.BauerCNG.com**

BAUER COMPRESSORS, INC.
1328 Azalea Garden Road
Norfolk, VA 23502
Tel. +1 (757) 855-6006
Fax +1 (757) 857-1041
CNGsales@BauerComp.com
www.BauerCNG.com



1066.02.18.250SP
Subject to technical changes