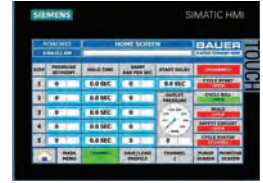
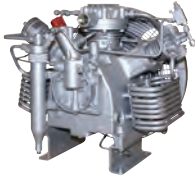


MICRO SERIES™ C120

CNG System For Small Fleets



FEATURES



COMPRESSOR

Featuring BAUER's proven C120 three-stage air-cooled compressor at the heart of the system.

- › Ideal for sites with low inlet pressure
- › Designed for continuous duty application
- › Extremely durable and low maintenance
- › Pressure lubricated

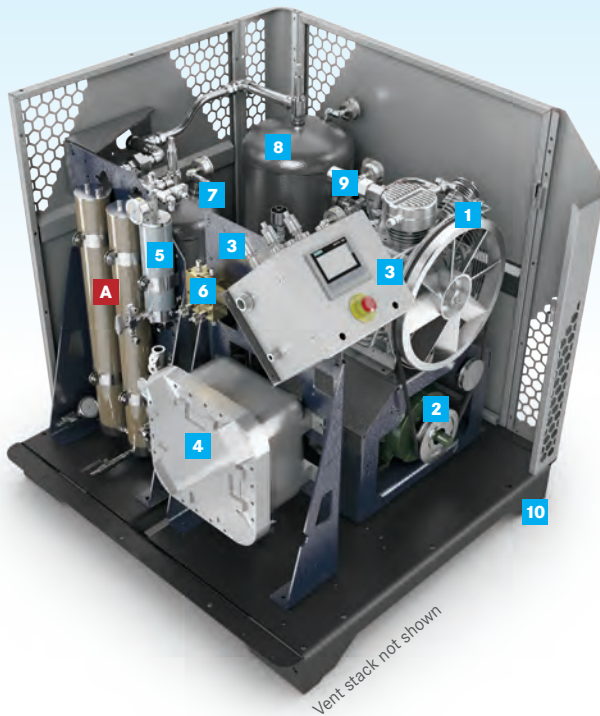
COST OF OWNERSHIP

Designed for long periods between maintenance intervals and very low cost of ownership. 8000 hrs between ring changes. 30,000 hrs before major overhaul. Lifetime BAUER support.

CONTROL SYSTEM

State-of-the-art control system and intuitive machine interface makes operating the unit simple.

- › Excellent diagnostics
- › Remote interface via smartphone option
- › Online manual and operating / maintenance instructions standard



- 1 BAUER C120 COMPRESSOR
- 2 HIGH EFFICIENCY TEFC MOTOR (BELT GUARD NOT SHOWN)
- 3 NEMA 4 PLC CONTROL PANEL WITH TOUCH SCREEN OPERATOR INTERFACE AND EMERGENCY STOP BUTTON
- 4 NEMA 7 STARTER PANEL
- 5 FINAL SEPARATOR
- 6 AUTOMATIC CONDENSATE DRAIN
- 7 INLET BUFFER TANK
- 8 VAPOR RECOVERY TANK
- 9 LOCALLY MOUNTED PRESSURE GAUGES
- 10 PRECISION FORMED HEAVY-DUTY STEEL SKID

TECHNICAL DATA

Model*	Inlet Pressure				Final Pressure (max.)		Capacity						Number of Stages	Running Speed	Motor		
	PSIG		BAR		PSIG	BAR	CFM	M ³ /H	DGE/H	DLE/H	GGE/H	GLE/H			RPM	hp	kW
	min	max	min	max	max	max											
C120-6	1	5	0.07	0.34	5000	345	6.3	11	2.7	10.2	3.2	12.1	3	965	5	3.7	
C120-9	1	5	0.07	0.34	5000	345	9	15	4	15.1	4.5	17	3	1350	7.5	5.5	

Note: All capacities are referenced to maximum inlet pressure. Capacity is reduced if inlet pressure is less than maximum. Performance tolerance +/- 5%.
 *C120-6=230 V, 1 Phase, 60 Hz; C120-9= 230-460 V, 3 Phase, 60 Hz

BENEFITS

- › **Powerful, totally integrated system** in a compact footprint.
- › **BAUER'S legendary performance, quality, and reliability guaranteed** – backed by the best warranty in the industry.
- › **Integrated CNG system, both easy and economical to install.** Intended for overnight refueling but capable of fast fill applications. Just connect utilities, hook up fuel post (fuel post not included) and the system is ready to fuel. Choose single or three phase.
- › **Appealing design** suitable for placement within public view.
- › **Efficient and reliable.** This unit is a perfect system for organizations getting started with CNG.
- › **Easy to maintain with low cost of ownership,** makes the unit very economical to operate.

- 11** POWDER-COATED GALVANNEAL STEEL FOR SUPERIOR CORROSION RESISTANCE (10 YEAR WARRANTY)
- 12** HINGED PANEL FOR ACCESS
- 13** ENCLOSURE DESIGNED FOR DURABILITY AND ATTRACTIVE APPEARANCE
- 14** REMOVABLE PANELS ON 3 SIDES FOR ACCESS
- A** HIGH PRESSURE DRYER

■ STANDARD ■ OPTIONAL

OPTIONAL FEATURES

- › High Pressure Drying
- › Cell Phone Modem with Remote Notification (Simple SCADA)
- › Compressor Crankcase Heater

Designed in compliance with
NFPA 52 and NFPA 70 Division 2, Group D.



SYSTEM FOOTPRINT

DIMENSIONS L X W X H inches (mm)

- › 55" x 57" x 52" (1397mm x 1448mm x 1321mm)
approximate excludes vent stack

WEIGHT pounds (kg)

- › 1430 - 1515 lb (649 - 687 kg)
depending upon model and options

CUSTOMER SUPPORT



GLOBAL SUPPORT



SINGLE SOURCE RESPONSIBILITY



LOW COST OF OWNERSHIP

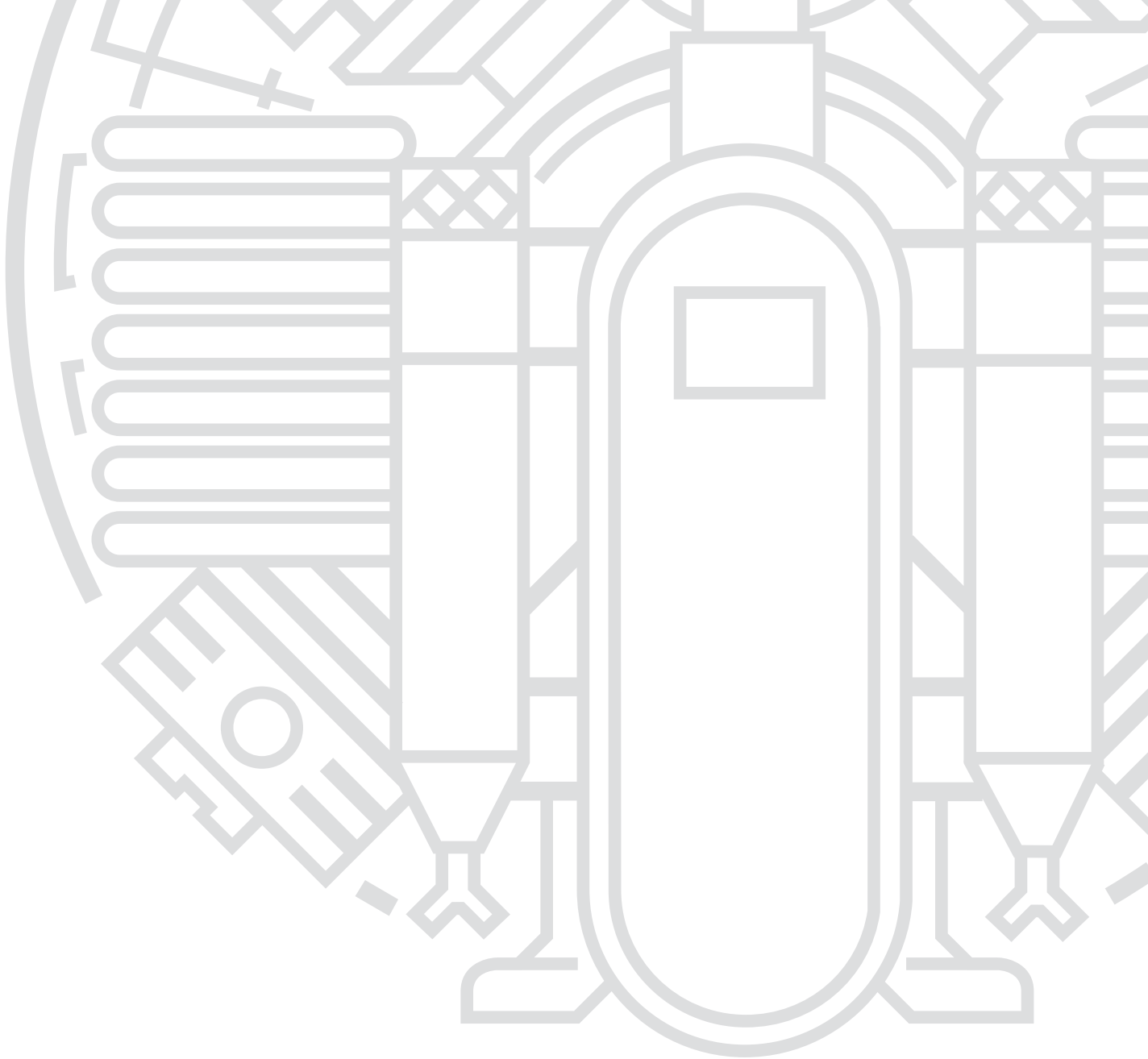


LIFECYCLE PERFORMANCE

FOR MORE INFORMATION PLEASE VISIT:

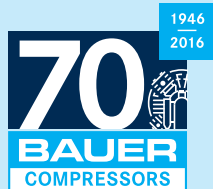
www.BauerCustomerSupport.com





**WATCH OUR NEW
CNG VIDEOS AT:
www.BauerCNG.com**

BAUER COMPRESSORS, INC.
1328 Azalea Garden Road
Norfolk, VA 23502
Tel. +1 (757) 855-6006
Fax +1 (757) 857-1041
CNGsales@BauerComp.com
www.BauerCNG.com



1061.02.18.250SP
Subject to technical changes