

N2IT[®] XL

Comprehensive Gas Assist Molding System



LEARN MORE AT: www.BauerPlastics.com

BAUER COMPRESSORS, INC.
1328 Azalea Garden Road
Norfolk, VA 23502
Tel. +1 (757) 855-6006
Fax +1 (757) 857-1041
www.BauerComp.com
www.BauerPlastics.com

BAUER PLASTICS TECHNOLOGY GROUP
RICK GORALSKI
Tel. (586) 491-8614
DENNIS PAUL
Tel. (586) 491-5931
www.BauerPlastics.com



1070.03.18.200SP
Subject to technical changes

FEATURES

GIT

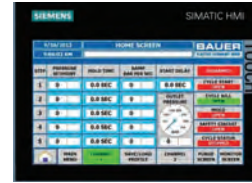


GAS INJECTION TECHNOLOGY

- › Reduce cycle times
- › Reduce resin costs
- › Improve part quality
- › Simplify mold design

COST OF OWNERSHIP

Designed for long periods between maintenance intervals and very low cost of ownership. 8000 hrs between ring changes. 30,000 hours before major overhaul. Lifetime BAUER support.



CONTROL SYSTEM

State-of-the-art control system with **True Track Ramping™** and intuitive machine interface makes operating the unit simple.

- › Real-time accurate diagnostics
- › On-screen manual & maintenance instructions

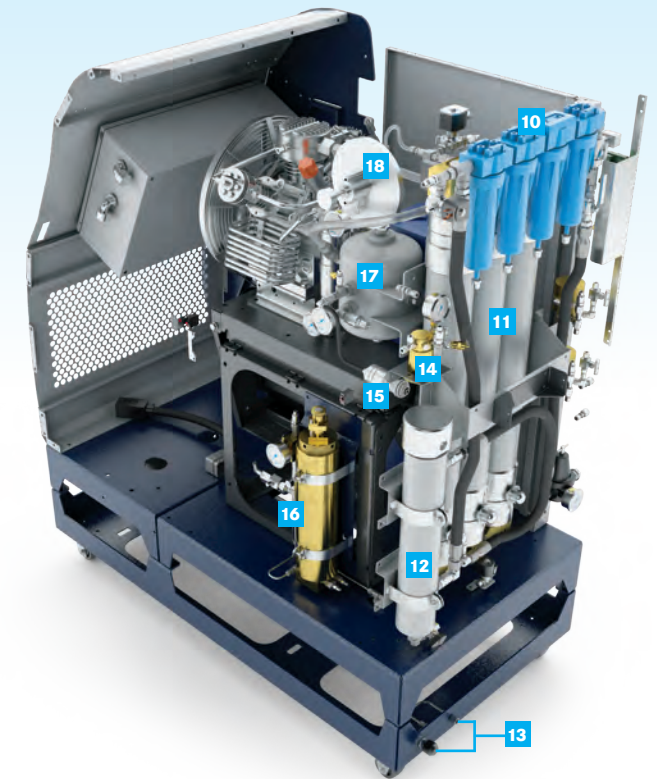
BENEFITS

- › The N2IT® XL incorporates an integrated nitrogen generator, compressor, storage and process control unit in one portable package.
- › Only compressed air and electrical power are required for the N2IT® XL to apply GIT (Gas Injection Technology) to any injection molding process, eliminating the need to purchase nitrogen.
- › The N2IT® XL is loaded with user-friendly features and maintains accurate and repeatable processing with its precision pressure control.
- › The N2IT® XL includes EUROMAP 62 interface, and can easily be connected with any injection molding machine in your facility.



- 1 SYSTEM CONTROL PANEL WITH USER INTERFACE
- 2 HIGH PRESSURE STORAGE CYLINDER (2ND CYLINDER IS OPTIONAL)
- 3 SYSTEM POWER CABLE
- 4 BAUER HIGH PRESSURE NITROGEN COMPRESSOR
- 5 LOW PRESSURE AIR INLET WITH REGULATOR
- 6 NITROGEN OUTPUT - CHANNEL 1
- 7 NITROGEN OUTPUT - CHANNEL 2
- 8 NITROGEN CONTROL UNIT OUTPUT VALVES
- 9 EUROMAP 62 CONNECTIONS

- 10 MEMBRANE PREFILTRATION SYSTEM (Particulate, Moisture & Hydrocarbon)
- 11 NITROGEN GENERATION MEMBRANE BUNDLE
- 12 MEMBRANE PREHEATER
- 13 REMOTE NITROGEN INLET WITH ISOLATION VALVE
- 14 NITROGEN CONTROL UNIT INLET REGULATOR
- 15 OXYGEN ANALYZER SENSOR
- 16 HIGH PRESSURE PURIFICATION SYSTEM
- 17 COMPRESSOR INLET BUFFER TANK
- 18 COMPRESSOR INLET REGULATOR



TECHNICAL DATA

Model	Nitrogen Flow at 98.0% Purity		Feed Air Required at: 101.5 PSIG (7 BAR)		Motor	
	SCFM	M ³ /HR	SCFM	M ³ /HR	HP	KW
5000 PSIG (414 BAR)						
N2IT XL	5	8.5	25	42.5	5	3.7

1) Capacity (FGD) is referenced to standard conditions. Tolerance +/- 5%. 2) Purity reflects content of O₂-free gas produced. Dimensions and weight are approximate. Volume flow rate is according to ISO 1217 with the following standard conditions: Inlet air pressure = sea level, 14.5 psia (1 bar a) Inlet air temperature = 68 oF (20 oC) Relative Water Vapor Pressure = 0 Contact BAUER for site conditions that are other than standard. Correction factors may apply that may derate performance.

SYSTEM FOOTPRINT

DIMENSIONS L X W X H inches (mm)
 › 69.375" x 37" x 82" (1762.125mm x 939.8mm x 2082.8mm)

WEIGHT pounds (kg)
 › 1,700 lb. (771.107 kg)

CUSTOMER SUPPORT

- GLOBAL SUPPORT
- SINGLE SOURCE RESPONSIBILITY
- LOW COST OF OWNERSHIP
- LIFECYCLE PERFORMANCE

FOR MORE INFORMATION PLEASE VISIT:
www.BauerCustomerSupport.com

