

# 4500 psi DOT/UN CASCADE SYSTEM

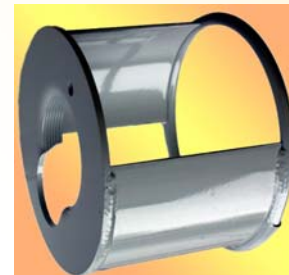
COMPLETE  
4500psi SYSTEM  
With 10-Year Retest



Shown is standard 4-cylinder cascade system with optional regulator.

## INCLUDES:

- ◆ New 4500 psi, 437 cu. ft. Cylinders
- ◆ Safety Device on each Valve
- ◆ Wall mounting Brackets
- ◆ Connector Hose from Compressor
- ◆ Heavy-duty 6 ft. filler hose
- ◆ All stainless steel fittings
- ◆ All fittings & pigtails
- ◆ 2-1/2" stainless steel liquid filled gauge
- ◆ Adjustable self-venting Regulator (optional)
- ◆ 10 year retest period
- ◆ 5-Year Parts Warranty



M2756 CAP  
Optional

**DELIVERY AND HOOK-UP IS INCLUDED  
WITH COMPRESSOR PURCHASE!**

*Suggested purchasing specifications on the back of this page*

10/14



## BREATHING AIR SYSTEMS

8855 E. Broad St., Reynoldsburg, OH 43068 - Phone: (614) 864-1235  
SALES: (800) 937-2479 FAX: (614) 864-0071 sales@breathingair.com  
[www.breathingair.com](http://www.breathingair.com)

Ocala, FL  
(352) 629-7712

Chattanooga, TN  
(423) 634-3184

Moweaqua IL  
(217) 768-4408

Michigan Center, MI  
(517) 783-4060

Pittsburgh, PA  
(412) 564-5756

Service facilities throughout the United States

## SUGGESTED PURCHASING SPECIFICATIONS

Made in America

**BREATHING AIR SYSTEMS CASCADE SYSTEM:** Choose the number of cylinders, to meet your requirements. The standard system is four (4) new, 4500 psi, DOT/UN approved, 437 cu.ft. cylinders.

- 1 Each tank is to be equipped with a new, soft seal valve, complete with appropriate approved safety relief device. Tanks are to be painted yellow with a 9"x6" vinyl label stating the cylinders pressure rating and gas the cylinder is being used for. Each tank is to have been internally inspected prior to valuing, with a dated sticker attesting to this inspection. A dome-type protective cap is to be supplied with each tank to protect the valve during shipping or transportation.
- 2 A 6000 psi manifold tee is to be supplied for each tank and a 6000 psi pigtail to connect each tank to the other. For one end of the system is to be provided a nut & nipple, an elbow and a 6000 psi 8-foot flexible hose, to connect from the compressor and the other end is to be provided a tee, a 2 -1/2" 0-7500 psi line gauge and the filler hose.
- 3 A heavy-duty 6" filler hose is to be provided. On the fill end shall be a rubber-covered 0-7500 psi gauge, a soft seat line valve, a bleeder valve and a hand-tight wheel and soft tip nipple to connect to any brand SCBA bottle.
- 4 A 4 ft. steel rail section and four ridged clamp sets are to be provided to secure the tanks in place, properly spaced.
- 5 Any components or fittings necessary for operation, but not mentioned above, will be considered to be included.
- 6 A 5-year warranty is to be provided on all cascade components, including the tanks, fittings, gauges and valves.

**If this cascade system is being purchased along with a compressor, the following may be added as specifications #8:**

- 8 The delivery technician will install and hook-up all of the above components at the time of the compressor start-up and test the entire system to full working pressure.

### **Options:**

- a. To add an adjustable filling regulator, with gauges, add **R** to the part number.
- b. For mobile applications, a valve protector (M2756) should be installed to meet NFPA 1901.

**PRICES AND SPECIFICATIONS ARE SUBJECT TO CHANGE**

# NUMBER OF SMALL CYLINDERS THAT CAN BE FILLED FROM YOUR STORAGE SYSTEM

Storage Cylinders, type and pressure	Number of Cascade Cylinders	30-minute SCBA Cylinders 2216 psi	30-minute SCBA Cylinders 4500 psi (5500psi)	45-minute SCBA Cylinders 4500 psi (5500psi)	60-minute SCBA Cylinders 4500 psi (5500psi)	75-minute SCBA Cylinders 5500 psi	80 cubic foot Scuba 3000 psi
ASME type filled to 6000 psi	2	21	10 (3)	7 (1)	5 (1)	1	9
	3	33	20 (8)	15 (4)	10 (3)	2	16
	4	46	36 (13)	25 (7)	15 (5)	4	22
DOT type rated 6000 psi filled to 6000 psi	2	25	13 (3)	9 (2)	6 (1)	1	12
	3	38	24 (8)	17 (5)	11 (3)	3	18
	4	55	38 (13)	28 (8)	19 (5)	5	28
	6	85	65 (23)	48 (14)	32 (10)	9	37
	8	115	92 (33)	69 (20)	46 (14)	13	61
ASME type filled to 5000 psi	2	17	5 (**)	3 (**)	2 (**)	**	3
	4	28	12 (**)	9 (**)	6 (**)	**	13
	6	39	20 (**)	14 (**)	9 (**)	**	19
	8	61	28 (**)	23 (**)	18 (**)	**	31
DOT type rated 5000 psi filled to 5000 psi	2	19	6 (**)	4 (**)	3 (**)	**	8
	4	44	22 (**)	16 (**)	11 (**)	**	22
	6	68	41 (**)	30 (**)	20 (**)	**	35
	8	92	61 (**)	45 (**)	30 (**)	**	49
	10	117	82 (**)	61 (**)	41 (**)	**	62
DOT type rated 4500 psi filled to 4500 psi	2	18	**	**	**	**	6
	4	41	**	**	**	**	17
	6	65	**	**	**	**	32
	8	88	**	**	**	**	45
	10	111	**	**	**	**	58

**\*\*When filling 4500 psi SCBAs from a 4500 psi storage bank, you will never get a totally filled cylinder. Several will be within the 80% range**

**NOTE 1:** These numbers are based on the small cylinders having been depleted down to their alarm or reserve pressure, and on using the cascade method of refilling.

**NOTE 2:** The use of an air-powered booster pump will increase the number of refills significantly, up to 50% more.