

# 5000 psi DOT/UN CASCADE

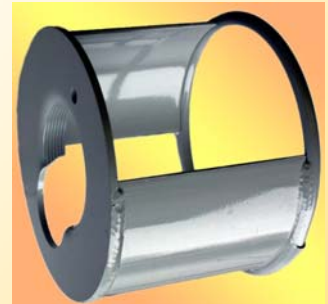
**COMPLETE  
5000psi SYSTEM  
With 10-Year Retest**

## **INCLUDES:**

- New, 5000 psi, 472 cu. ft. cylinders
- Deluxe valves
- Safety device on each valve
- 2 1/2" stainless steel, liquid filled gauge
- Wall mounting brackets
- Connector hose from compressor
- Heavy-duty 6 foot filler hose
- All stainless steel fittings
- 6000 psi pigtails
- Adjustable self-venting regulator (optional)
- 10 year retest period
- 5-Year parts warranty



**Shown is standard 4-cylinder cascade system with optional regulator.**



**M2756 CAP  
Optional**

**DELIVERY AND HOOK-UP IS INCLUDED  
WITH COMPRESSOR PURCHASE!**

*Suggested purchasing specifications on the back of this page*

**10/14**



## **BREATHING AIR SYSTEMS**

8855 E. Broad St., Reynoldsburg, OH 43068 - Phone: (614) 864-1235  
SALES: (800) 937-2479 FAX: (614) 864-0071 sales@breathingair.com

[www.breathingair.com](http://www.breathingair.com)

Ocala, FL  
(352) 629-7712

Chattanooga, TN  
(423) 634-3184

Moweaqua IL  
(217) 768-4408

Michigan Center, MI  
(517) 783-4060

Pittsburgh, PA  
(412) 564-5756

**Service facilities throughout the United States**

## **SUGGESTED PURCHASING SPECIFICATIONS**

**Made in the U.S.A.**

- 1 BREATHING AIR SYSTEMS CASCADE: Choose the number of cylinders, to fit your requirements. The standard system is four (4) new, 5000 psi, DOT/UN approved, 472 cu.ft. cylinders.
- 2 Each tank is to be equipped with a new, soft seat valve, complete with appropriate approved safety relief device. Tanks are to be painted yellow with a 9"x6" vinyl label stating the cylinders pressure rating and gas the cylinder is being used for. Each tank is to have been internally inspected prior to being valved, with a dated sticker attesting to this inspection. A dome-type protective cap is to be supplied with each tank to protect the valve during shipping or transportation.
- 3 A 6000 psi manifold tee is to be supplied for each tank and a 6000 psi pigtail to connect each tank to the other. For one end of the system is to be provided a nut & nipple, an elbow and a 6000 psi 8-inch flexible hose, to connect from the compressor, and for the other end is to be provided a tee, a 2-1/2 foot, 7500 psi line gauge and the filler hose.
- 4 A heavy-duty 6 ft. filler hose is to be provided with a radius protector on the cascade end. On the fill end shall be a rubber-covered 0-7500 psi gauge, a soft seat line valve, a bleeder valve and a hand-tight wheel and soft tip nipple to connect to any brand SCBA bottle.
- 5 A 4 ft. steel rail section and four ridged clamp sets are to be provided to secure the tanks in place, properly spaced.
- 6 Any components or fittings necessary for a standard installation, but not mentioned above, will be considered to be included.
- 7 A 5-year warranty is to be provided on all cascade components, including the tanks, fittings, gauges and valves.

**If this cascade system is being purchased along with a compressor, the following may be added as specifications #8:**

- 8 The delivery technician will install and hook-up all of the above components at the time of the compressor start-up and test the entire system to full working pressure.

**\* Options:**

- a To add an adjustable filling regulator, with gauges, add **R** to the part number.
- b For Mobile application a valve protector (M2756) should be installed to meet NFPA 1901.

***PRICES AND SPECIFICATIONS ARE SUBJECT TO CHANGE***

# NUMBER OF SMALL CYLINDERS THAT CAN BE FILLED FROM YOUR STORAGE SYSTEM

Storage Cylinders, type and pressure	Number of Cascade Cylinders	30-minute SCBA Cylinders 2216 psi	30-minute SCBA Cylinders 4500 psi (5500psi)	45-minute SCBA Cylinders 4500 psi (5500psi)	60-minute SCBA Cylinders 4500 psi (5500psi)	75-minute SCBA Cylinders 5500 psi	80 cubic foot Scuba 3000 psi
ASME type filled to 6000 psi	2	21	10 (3)	7 (1)	5 (1)	1	9
	3	33	20 (8)	15 (4)	10 (3)	2	16
	4	46	36 (13)	25 (7)	15 (5)	4	22
DOT type rated 6000 psi filled to 6000 psi	2	25	13 (3)	9 (2)	6 (1)	1	12
	3	38	24 (8)	17 (5)	11 (3)	3	18
	4	55	38 (13)	28 (8)	19 (5)	5	28
	6	85	65 (23)	48 (14)	32 (10)	9	37
	8	115	92 (33)	69 (20)	46 (14)	13	61
ASME type filled to 5000 psi	2	17	5 (**)	3 (**)	2 (**)	**	3
	4	28	12 (**)	9 (**)	6 (**)	**	13
	6	39	20 (**)	14 (**)	9 (**)	**	19
	8	61	28 (**)	23 (**)	18 (**)	**	31
DOT type rated 5000 psi filled to 5000 psi	2	19	6 (**)	4 (**)	3 (**)	**	8
	4	44	22 (**)	16 (**)	11 (**)	**	22
	6	68	41 (**)	30 (**)	20 (**)	**	35
	8	92	61 (**)	45 (**)	30 (**)	**	49
	10	117	82 (**)	61 (**)	41 (**)	**	62
DOT type rated 4500 psi filled to 4500 psi	2	18	**	**	**	**	6
	4	41	**	**	**	**	17
	6	65	**	**	**	**	32
	8	88	**	**	**	**	45
	10	111	**	**	**	**	58

**\*\*When filling 4500 psi SCBAs from a 4500 psi storage bank, you will never get a totally filled cylinder. Several will be within the 80% range**

**NOTE 1:** These numbers are based on the small cylinders having been depleted down to their alarm or reserve pressure, and on using the cascade method of refilling.

**NOTE 2:** The use of an air-powered booster pump will increase the number of refills significantly, up to 50% more.