

6000 psi DOT/ UN CASCADE SYSTEM

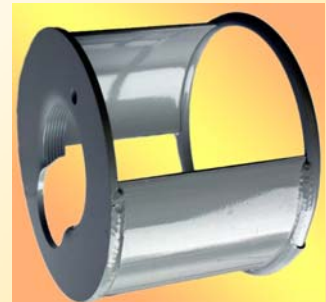
**COMPLETE
6000psi SYSTEMS
With 10-Year Retest**

INCLUDES:

- New, 6000 psi, 510 cu. ft. Cylinders
- Deluxe valves
- Safety device on each valve
- 2 1/2" stainless steel, liquid filled gauge
- Wall mounting brackets
- Connector hose from compressor
- Heavy-duty 6 foot filler hose
- All stainless steel fittings
- 6000-psi pigtails
- Adjustable self-venting regulator (optional)
- 10-year retest period
- 5-Year parts warranty



Shown is standard 4-cylinder cascade system with optional regulator.



**M2756 CAP
Optional**

**DELIVERY AND HOOK-UP IS INCLUDED
WITH COMPRESSOR PURCHASE!**

Suggested purchasing specifications on the back of this page

10/14



BREATHING AIR SYSTEMS

8855 E. Broad St., Reynoldsburg, OH 43068 - Phone: (614) 864-1235
SALES: (800) 937-2479 FAX: (614) 864-0071 sales@breathingair.com

www.breathingair.com

Ocala, FL
(352) 629-7712

Chattanooga, TN
(423) 634-3184

Moweaqua IL
(217) 768-4408

Michigan Center, MI
(517) 783-4060

Pittsburgh, PA
(412) 564-5756

Service facilities throughout the United States

SUGGESTED PURCHASING SPECIFICATIONS

Made in the U.S.A.

BREATHING AIR SYSTEMS CASCADE SYSTEM: Choose the number of cylinders, to fit your requirements. The standard system is four (4) new, 6000 psi, DOT/UN approved, 510 cu.ft. cylinders.

- 1 Each tank is to be equipped with a new, softseat valve, complete with appropriate approved safety relief device. Tanks are to be painted yellow with a 9"x6" vinyl label stating the cylinders pressure rating and gas the cylinder is being used for. Each tank is to have been internally inspected prior to being valved, with a dated sticker attesting to this inspection. A dome-type protective cap is to be supplied with each tank to protect the valve during shipping or transportation.
- 2 A 6000 psi manifold tee is to be supplied for each tank and a 6000 psi pigtail to connect each tank to the other. For one end of the system is to be provided a nut & nipple, an elbow and a 6000 psi 8-inch flexible hose, to connect from the compressor, and for the other end is to be provided a tee, a 2-1/2 inch 10,000 psi line gauge and the filler hose.
- 3 A heavy-duty 6 ft. filler hose is to be provided. On the fill end shall be a rubber-covered 0-7500 psi gauge, a soft seat line valve, a bleeder valve and a hand-tight wheel and soft tip nipple to connect to any brand SCBA bottle.
- 4 A 4ft. steel rail section and four ridged clamp sets are to be provided to secure the tanks in place, properly spaced.
- 5 Any components or fittings necessary for a standard installation, but not mentioned above, will be considered to be included.
- 6 A 5-year warranty is to be provided on all cascade components, including the tanks, fittings, gauges and valves.

If this cascade system is being purchased along with a compressor, the following may be added as specifications #8:

- 8 The delivery technician will install and hook-up all of the above components at the time of the compressor start-up and test the entire system to full working pressure.

OPTIONS:

- a To add an adjustable filling regulator, with gauges, add **R** to the part number.
- b For Mobile application a valve protector (M2756) should be installed to meet NFPA 1901.

PRICES AND SPECIFICATIONS ARE SUBJECT TO CHANGE

NUMBER OF SMALL CYLINDERS THAT CAN BE FILLED FROM YOUR STORAGE SYSTEM

Storage Cylinders, type and pressure	Number of Cascade Cylinders	30-minute SCBA Cylinders 2216 psi	30-minute SCBA Cylinders 4500 psi (5500psi)	45-minute SCBA Cylinders 4500 psi (5500psi)	60-minute SCBA Cylinders 4500 psi (5500psi)	75-minute SCBA Cylinders 5500 psi	80 cubic foot Scuba 3000 psi
ASME type filled to 6000 psi	2	21	10 (3)	7 (1)	5 (1)	1	9
	3	33	20 (8)	15 (4)	10 (3)	2	16
	4	46	36 (13)	25 (7)	15 (5)	4	22
DOT type rated 6000 psi filled to 6000 psi	2	25	13 (3)	9 (2)	6 (1)	1	12
	3	38	24 (8)	17 (5)	11 (3)	3	18
	4	55	38 (13)	28 (8)	19 (5)	5	28
	6	85	65 (23)	48 (14)	32 (10)	9	37
	8	115	92 (33)	69 (20)	46 (14)	13	61
ASME type filled to 5000 psi	2	17	5 (**)	3 (**)	2 (**)	**	3
	4	28	12 (**)	9 (**)	6 (**)	**	13
	6	39	20 (**)	14 (**)	9 (**)	**	19
	8	61	28 (**)	23 (**)	18 (**)	**	31
DOT type rated 5000 psi filled to 5000 psi	2	19	6 (**)	4 (**)	3 (**)	**	8
	4	44	22 (**)	16 (**)	11 (**)	**	22
	6	68	41 (**)	30 (**)	20 (**)	**	35
	8	92	61 (**)	45 (**)	30 (**)	**	49
	10	117	82 (**)	61 (**)	41 (**)	**	62
DOT type rated 4500 psi filled to 4500 psi	2	18	**	**	**	**	6
	4	41	**	**	**	**	17
	6	65	**	**	**	**	32
	8	88	**	**	**	**	45
	10	111	**	**	**	**	58

****When filling 4500 psi SCBAs from a 4500 psi storage bank, you will never get a totally filled cylinder. Several will be within the 80% range**
NOTE 1: These numbers are based on the small cylinders having been depleted down to their alarm or reserve pressure, and on using the cascade method of refilling.

NOTE 2: The use of an air-powered booster pump will increase the number of refills significantly, up to 50% more.